

Battery Replacement for the DCS 465 Camera

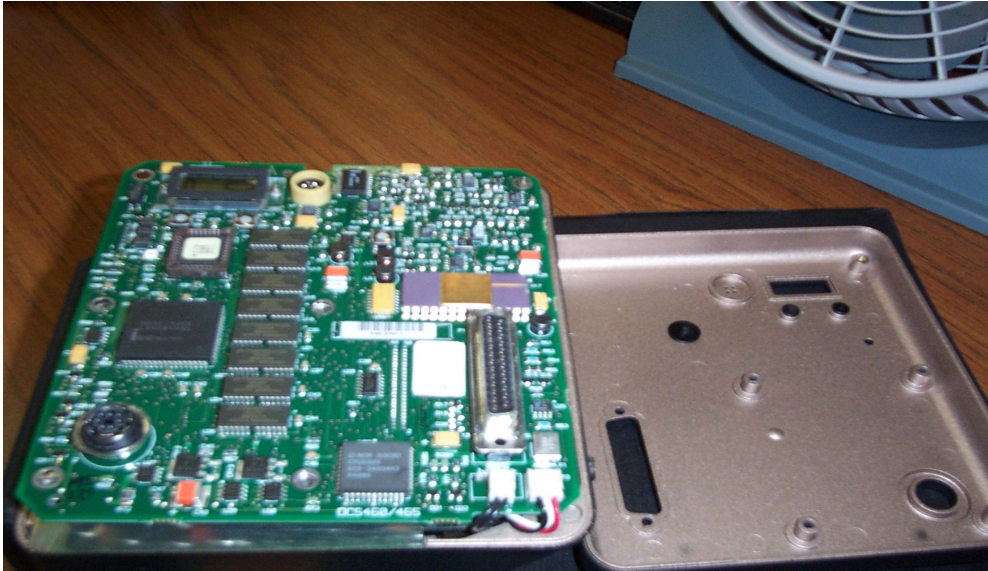
- 1) Remove the two black screws that are next to the Kodak Label. Check image:



- 2) Flip over the Camera and remove the two SCSI silver screws and the four black screws that are located at the back side:



- 3) Holding the top cover upside DOWN so the switches will not disappear separate the top and the bottom pieces:



- 4) Remove the Battery connector from the PCB board. Back right side. And remove the two silver screws from the blades covering the Battery and slowly remove the old battery. Follow the reverse procedure to install the new one:



How to maximize the number of pictures per battery charge

- Charge the battery as close as possible to the time the camera will be used (for example, 1-2 hours).
- Do not connect the camera to the DCS AC Battery Charger/Adapter for long periods of time. Continuous charging does not maintain a full charge.
- Use the DCS AC Battery Charger/Adapter when the camera is connected to a host computer. Cameras connected to an active SCSI controller on a host computer do not completely enter "sleep" mode and use battery energy at a faster rate.
- Limit the use of camera metering or auto-focusing.
- Use a portable battery pack for applications that require more power capacity. Quantum Instruments (www.quantum.com) offers several portable battery packs. Contact Quantum Instruments or your photographic dealer for more information.

How to condition the battery

- Step 1:** Connect the DCS AC Battery Charger/Adapter to the camera and verify that the charging LCD on the camera back is lit.
- Step 2:** Charge the battery for 1 1/2 to 2 hours. The battery is fully charged when all three segments of the battery icon remain lit.

- Step 3:** Disconnect the DCS AC Battery Charger/Adapter.
- Step 4:** Connect the SCSI cable to the camera and to the host computer.
- Step 5:** Power on the camera, then open ADOBE PHOTOSHOP Software.
- Step 6:** Press the shutter button halfway to activate the camera display.
- Step 7:** Press the SCSI ID button until the camera displays 'PC'. The camera will remain active and drain the battery. The battery is fully drained when the bottom segment of the battery icon blinks.
- Step 8:** Connect the DCS AC Battery Charger/Adapter to the camera and charge the battery for a **minimum of two hours**.
- Step 9:** Repeat Steps 3 thru 8 for **three additional cycles**.

Written By

Dimitrios Theodorou