

New

FUJIX DIGITAL CAMERA
DS-560/DS-565

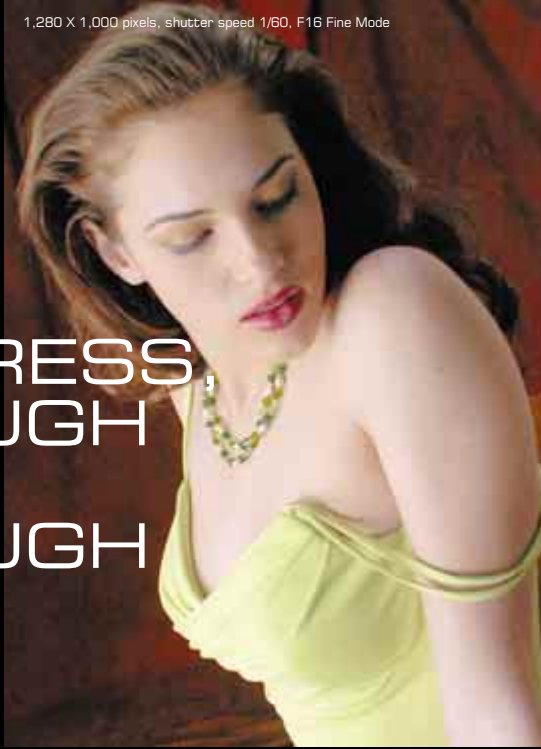


Go with the Elite Digital SLRs

1,280 X 1,000 pixels, shutter speed 1/60, F16 Fine Mode

The sample images accompanied by shooting data were taken by Mr. Hiroyuki Hayakawa and Mr. Tsunehiko Suzuki with a DS-560/DS-565.

REAL PROGRESS, THROUGH AND THROUGH



1,280 X 1,000 pixels, shutter speed 1/60, F16 Hi Mode



1,280 X 1,000 pixels, shutter speed 1/60, F22 Hi Mode



Advances occasionally appear in a breakthrough, but they generally take a series of improvements. One after another, and then another.

That's the story of the new Fujix DS-560 and DS-565 digital cameras. Working to deliver all the promise of digital photography, Fujifilm engineers reworked key elements of the earlier DS-505A/DS-515A. The larger F4.8 aperture expands your creative opportunities, while the new built-in SCSI port is ready for fast, convenient downloads or output. Image quality is better than ever. And there's more.

Take the next step, and go with an elite digital SLR. The Fujix DS-560 or DS-565 will give you every reason for pride in your digital portfolio. Because they're the product of real progress, through and through.

FUJIX Digital Camera
DS-560/DS-565



NATURAL HANDLING

It's the hard-to-define professional touch that sets these trendsetters apart from the others.

Nearly 100% Accurate Point of View



The DS-560 and DS-565 take the guesswork out of the creative moment with a real-image viewfinder showing 98% of the actual frame. No guessing or hoping, just precise artistry.



This achievement lies in Fujifilm's original condenser optics system, which directs nearly all the light to the CCD. Located between the shutter and the CCD, this radically miniaturized, high-precision masterpiece almost eliminates the frustrating discrepancy between other models' viewfinder image and the one they record. When you compare, you'll agree Fujifilm has the right point of view.

unanimous acclaim from professionals. As you bring their high performance to your digital work, you'll like the instantaneous synchronization of the focal length and viewfinder field of view. Handled automatically by the condenser optics system, the adjustment makes digital creativity feel natural.

Effective ISO Up to 3200

With more light reaching the CCD image sensor, the effective ISO is raised to an ultrahigh 3200. That means you won't need a flash in low light and you can use a faster shutter speed in action photography. There's also an effective-ISO 800 setting for most outdoor photography, along with an effective-ISO 1600 mode. Switch from one to another

anytime, and you'll have the sensitivity needed for the scene, mood and moment.

A Different Angle

Along with the Accessory Shoe on the top of the camera, there's an external synchro-flash terminal on the lower front. Just plug in your flash cable, and you'll be ready for shots that are varied and expressive.

Capture All the Action



Use the DS-565 to capture all the action with Continuous Mode shooting as fast as 3 frames per second.

The DS-560 records fast-moving subjects at a fast 1 frame per second*, while the DS-565 has a Continuous Mode for shooting up to 12 frames at a high-speed 3 frames per second. It's everything you need and want for action photography. And you won't worry about having enough power for rapid-fire shooting since the latest battery technologies deliver as many as 1,000 frames from a single charge. With its new Nickel Metal Hydride construction, the rechargeable battery is also easier on the environment.

* Recording in the Basic Mode with the Image Memory Card HG-15.

The First Choice in Lenses



The DS-560 and DS-565 use F-mount Nikkor lenses from Nikon — the same ones that have won

The DS-560 and DS-565 are compatible with a wide range of F-mount lenses from Nikon.



Definitely Better



It's a simple fact that digital quality starts with the image sensor. That's why the DS-560 and DS-565 have an improved 2/3-inch

CCD with 1.4 million square pixels in an effective array of $1,280 \times 1,000$ — about the resolution of high-definition television. Even with this exceptional performance, data handling is easy with our High Data-Compression Technologies to speed up recording and maintain the highest quality.

F4.8 Aperture and Precision Setting

The DS-560 and DS-565 have a larger F4.8 aperture for capturing the nuances of natural light, even in relatively dim conditions. To ensure absolute precision, the specific F-stop is set by the innovative condenser optics system, even when you change to another lens. Since a CCD has a narrower exposure latitude than 35 mm film, there's no room for error. And the Fujifilm system is foolproof.

True to Life

Unmatched tonality, minimal moiré, less noise . . . the colors you see will be the colors you get with the DS-560 and DS-565. They're



1,280 X 1,000 pixels, shutter speed 1/350, F4.8 Hi Mode

equipped with a high-performance optical low-pass filter and a primary color filter. Working together, the filters retain all the vibrancy and subtlety of natural colors "out there."

Smoother and Clearer

Drawing on all its expertise in imaging, Fujifilm has developed an original new image processing algorithm that enhances color reproduction and maintains smooth gradations. The DS-560 and DS-565 also have two new processing modes in addition to the Standard Mode. Nearly eliminating sharpness, the Print Mode suppresses flare and blurring to achieve a professional-quality image that's perfect for printing. The Clear Mode creates a sharp, high-contrast image. After it has been stored, you can choose the TIFF-YC or JPEG format.

Explore More

Especially when the lighting is difficult, you'll want to experiment with the exposure, and the Auto Bracketing Mode is ready to help. It automatically chooses the appropriate settings for the first image, then shoots the same scene two more times. One of the additional shots is taken at $+0.25\text{EV}$ and the other at -0.25EV .

Later you can choose the results with the professional look that you insist on.



Confident Control

In the Programmed AE Mode, the camera determines the optimal combination of aperture and shutter speed. For added control, there are many other exposure modes as well — Shutter Priority AE, Aperture Priority AE, Manual, Exposure Correction, Focus Lock and a wide range of shooting modes. The Auto White Balance Mode gives you the ideal balance in most situations, while the six-mode Manual adjustment can be set for natural light conditions or various artificial illumination. With up to eight programmed settings, the Customize Mode makes it easy and fast to set the AE Lock, Image Quality Mode, AF Mode display and other functions.



SERIOUS QUALITY

Image quality is one of those factors you just won't compromise on. Neither will we.



DIGITAL MASTERY

The digital factor means immediacy, freedom and creativity. And those are words to live by.

Here and Now



To check a shot immediately, add the optional Color LCD Viewfinder to your equipment. Just attach it to the Accessory Shoe, and then connect the cable to the video

output port on the side. It's compact and very handy.

One-Step Output



There's no need to move your image files to a PC before printing. On the lower back of the body, there's a new

SCSI port, so you can send output directly to a compatible color printer. You'll save a lot of time and bother.

Free and Easy

Your shots are stored on a removable HG Series Image Memory Card* available in four versions holding from 5 MB to 40 MB.

* Performance with other products is not guaranteed.

Ultracompact and convenient, these versatile ATA-compliant cards also simplify data transfer if you add a PC Card reader to your computer setup.

Maintaining all the quality you expect from Fujifilm, compression technologies shrink files to about 160 KB in the Basic Image Quality Mode. Not only is recording accelerated to around 1 frame per second, but a smaller file takes less time to send as an e-mail attachment. With images saved in the JPEG format, they're also ready for your digital artistry in all of today's widely used graphics applications.



The Command Post

The optional IF-D56 software suite lets you control the DS-560 and DS-565 from a Windows® or Macintosh® computer.

Simply connect the camera through its SCSI port, and use **the camera setting software** to control everything from bracketing to image quality. Giving you remote control over all essential functions — from exposure modes to shutter release — **the camera shooting software** is the ideal assistant for numerous studio shots. You won't even have to get up from your chair! **The image download software** has a Rotate command and other editing functions to manipulate thumbnail images saved on the camera's PC Card or your hard disk drive. If you need to add time/location data to your images, you can also plug in a commercially available Global Positioning System (GPS) unit.



SPECIFICATIONS

FUJIX DIGITAL CAMERAS DS-560/DS-565

Format	Digital SLR camera with interchangeable lenses	File size	1,280 × 1,000 pixels, 24-bit color																																							
Lens mount	Nikon F-mount	Storage media	ATA-compliant Type I or II PC Card* (PCMCIA release 2.1) *Performance with other products is not guaranteed.																																							
Focus modes	Auto/Manual	File format	JPEG (Exif ver. 1.1) with 3 compression ratios TIFF-YC (Exif ver. 1.1)																																							
Exposure control	Programmed AE, Aperture Priority AE, Shutter Priority AE, and Manual modes	Number of images	<table border="1"> <thead> <tr> <th rowspan="2">Image quality mode</th> <th rowspan="2">Image compression ratio</th> <th rowspan="2">Data size/frame</th> <th colspan="4">Min. frames per card</th> </tr> <tr> <th>HG-5</th> <th>HG-10</th> <th>HG-15</th> <th>HG-40</th> </tr> </thead> <tbody> <tr> <td>Hi</td> <td>Uncompressed</td> <td>Approx. 2.45 MB</td> <td>1</td> <td>4</td> <td>5</td> <td>16</td> </tr> <tr> <td>Fine</td> <td>1/4</td> <td>Approx. 640 KB</td> <td>7</td> <td>16</td> <td>21</td> <td>60</td> </tr> <tr> <td>Normal</td> <td>1/8</td> <td>Approx. 320 KB</td> <td>15</td> <td>33</td> <td>43</td> <td>124</td> </tr> <tr> <td>Basic</td> <td>1/16</td> <td>Approx. 160 KB</td> <td>29</td> <td>64</td> <td>84</td> <td>243</td> </tr> </tbody> </table>	Image quality mode	Image compression ratio	Data size/frame	Min. frames per card				HG-5	HG-10	HG-15	HG-40	Hi	Uncompressed	Approx. 2.45 MB	1	4	5	16	Fine	1/4	Approx. 640 KB	7	16	21	60	Normal	1/8	Approx. 320 KB	15	33	43	124	Basic	1/16	Approx. 160 KB	29	64	84	243
Image quality mode	Image compression ratio	Data size/frame	Min. frames per card																																							
			HG-5	HG-10	HG-15	HG-40																																				
Hi	Uncompressed	Approx. 2.45 MB	1	4	5	16																																				
Fine	1/4	Approx. 640 KB	7	16	21	60																																				
Normal	1/8	Approx. 320 KB	15	33	43	124																																				
Basic	1/16	Approx. 160 KB	29	64	84	243																																				
Shutter control	Electronically controlled focal plane shutter Manual: 1/2,000–1/8 sec. Auto: 1/2,000–1/8 sec. Synchro-flash: 1/250 sec. max.	Video output	NTSC/PAL																																							
Aperture	F=4.8–38 (set by condenser optics system)	SCSI terminal	D-sub (25-pin)																																							
EV compensation	0.25 EV steps/±2 EV max.	GPS input/ External terminal	Mini DIN (8-pin) Global Positioning System data input and triggering input from slave adaptor SA-D5																																							
Viewfinder	Optical viewfinder with approx. 98% frame coverage and approx. 0.7× viewing magnification	Power source	Rechargeable Nickel Metal Hydride battery/External power supply																																							
Continuous frame advance	DS-560: Approx. 1 frame/sec.* DS-565: Approx. 3 frames/sec. up to 12 frames *When using HG-15 at Basic mode	Dimensions	164 (W) × 153 (H) × 120 (D) mm/6.5 (W) × 6.0 (H) × 4.7 (D) in.																																							
CCD image sensor	2/3-inch CCD with 1.4 million pixels (effective 1.3 million pixels)	Weight	DS-560: 1,850 g/4.08 lb. (with battery/without lens) DS-565: 1,860 g/4.1 lb. (with battery/without lens)																																							
Resolution	1,280 × 1,000 pixels, 8 bits/color (24-bit color)																																									
Effective ISO	ISO 800/1600/3200 modes																																									
White balance	Auto/Manual 6 modes (±3 steps compensation in each of 6 modes)																																									

Specifications are subject to change without notice.

OPTIONAL ACCESSORIES



Fujix Image Memory Cards
HG-5, HG-10,
HG-15 and HG-40



Fujix Power Supply Kit
PK-D56
• Fujix AC Power Adapter AC-D56
• Fujix Rechargeable Battery Pack BP-D56



Fujix LCD Viewfinder
LV-D3

Fujix Interface Software for DS-560/DS-565
IF-D56
• Camera shooting software
• Image downloading software
• Camera setting software

Fujix Rechargeable Battery Pack
BP-D56

Fujix PC Card Reader
CR-500

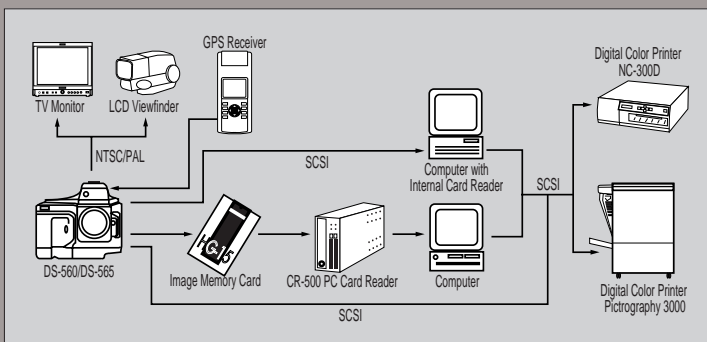
Fujix Carrying Case
LC-D5

Fujix DS Camera Plug-in Module for Photoshop
SD-D5*

Fujix Slave Adaptor
SA-D5

*SD-D5 is required for the images saved in the TIFF-YC format.

SYSTEM CONFIGURATION



Macintosh® is a registered trademark of Apple Computer, Inc.
Windows® is a registered trademark of Microsoft Corporation.
All other trademarks are the property of their respective holders.

PRODUCT DIAGRAMS

